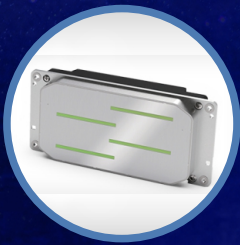


High-end Flatbed UV Printer  
for greater productivity on bigger material!



# H2513ET PRO

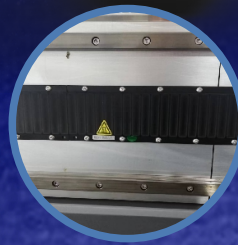
-high resolution, high speed and durability Epson T3200 heads!



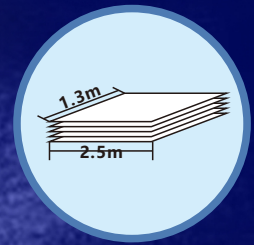
Up to 8x T3200 heads  
One head 4 colors



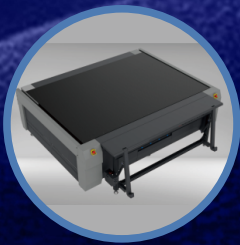
VSDT technology creates  
smooth gradation and  
solid colors



Built-in magnetic  
linear motor and  
metal grid system



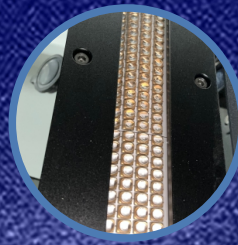
Print up to 38 full-size  
boards an hour



4-Zone Suction  
Platform with Media  
Alignment Pins and  
Built-in Extension Table



Gntek negative pressure  
system plus white ink  
circulation system



Powerful and  
energy-saving  
water-cooling  
LED UV lamps

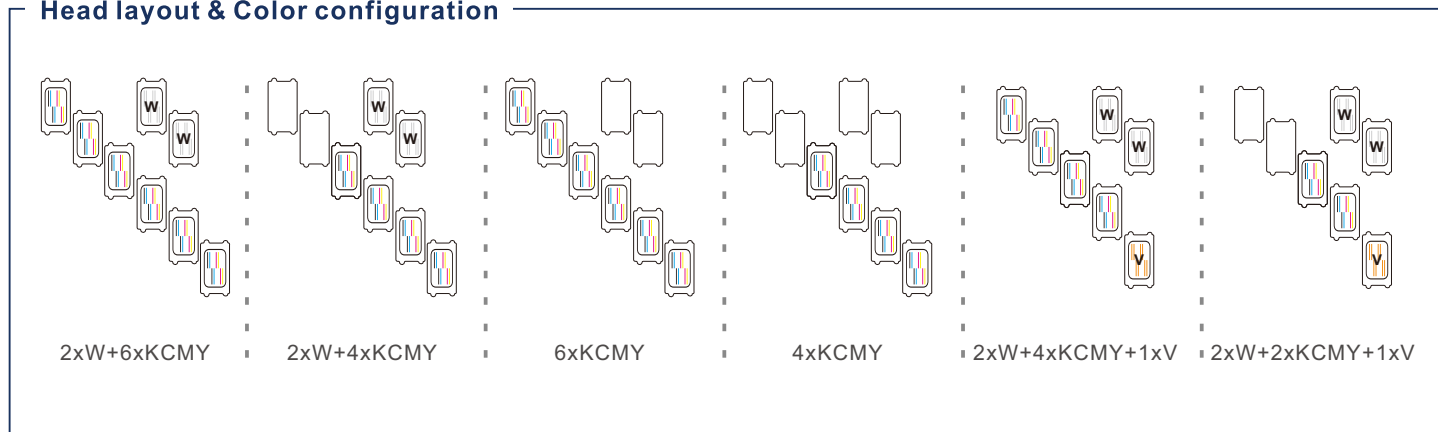


Auto height detector  
Up to 100mm thickness  
substrate

ITEM	SPECIFICATION																				
Model	H2513ET PRO																				
Print Head	4~8 Epson T3200-U3 print heads																				
Print Technology	Drop-On-Demand Piezo with Variable Dot																				
Resolution	726x600/900/1200dpi																				
Curing System	Dual water cooling LED UV curing lamps																				
Ink	UV curable ink																				
Ink Supply System	Gntek negative pressure system and white ink stirring & circulation system																				
Ink Tank	2500ml																				
Media Thickness	Up to 100mm																				
Media Type	Acrylic, Aluminum sheet, Foam board, PVC board, Leather, Glass, Wood, Ceramic tile, etc																				
Table Size	2560x1330mm																				
Printing Size	Max. 2500x1300mm																				
Printing Speed	<table border="1"> <thead> <tr> <th>Printing Mode</th> <th>Resolution</th> <th>6xKCMY</th> <th>2xW+4xKCMY</th> <th>2xW+2xKCMY+1xV</th> </tr> </thead> <tbody> <tr> <td>Draft</td> <td>726x600dpi</td> <td>114sqm/h</td> <td>74sqm/h</td> <td>38sqm/h</td> </tr> <tr> <td>Production</td> <td>726x600dpi</td> <td>85sqm/h</td> <td>62sqm/h</td> <td>32sqm/h</td> </tr> <tr> <td>Hi-resolution</td> <td>726x900dpi</td> <td>66sqm/h</td> <td>48sqm/h</td> <td>23sqm/h</td> </tr> </tbody> </table>	Printing Mode	Resolution	6xKCMY	2xW+4xKCMY	2xW+2xKCMY+1xV	Draft	726x600dpi	114sqm/h	74sqm/h	38sqm/h	Production	726x600dpi	85sqm/h	62sqm/h	32sqm/h	Hi-resolution	726x900dpi	66sqm/h	48sqm/h	23sqm/h
	Printing Mode	Resolution	6xKCMY	2xW+4xKCMY	2xW+2xKCMY+1xV																
	Draft	726x600dpi	114sqm/h	74sqm/h	38sqm/h																
	Production	726x600dpi	85sqm/h	62sqm/h	32sqm/h																
Hi-resolution	726x900dpi	66sqm/h	48sqm/h	23sqm/h																	
Data Interface	External: USB3.0; Internal: Fiber Optical																				
Working Environment	Temp.20°C~30°C, Humidity:35%~65%																				
Software	ONYX RIPCenter+GZ control console																				
Power Requirements	Single-phase, AC220V±10%, 50/60Hz, 23A(Printer&UV Chiller)+14A(Vacuum System)																				
Packed/Installed Size	LxWxH(mm): 5420x2300x1800/5170x2825x1520																				
G.W./N.W.	1700kgs/2218kgs																				

**\*Specifications are liable to change without prior notice.**

### Head layout & Color configuration



### Gongzheng Group Co., Ltd.

Add: Miaobei Village, Yongjia County, Wenzhou City, Zhejiang Province, China 325105  
 Tel: +86-577-67319778  
 Email: gzsales@gongzheng.com  
 Web: www.gongzheng.com

Scan to watch video



@GONGZHENG GROUP

### Authorized distributor:

