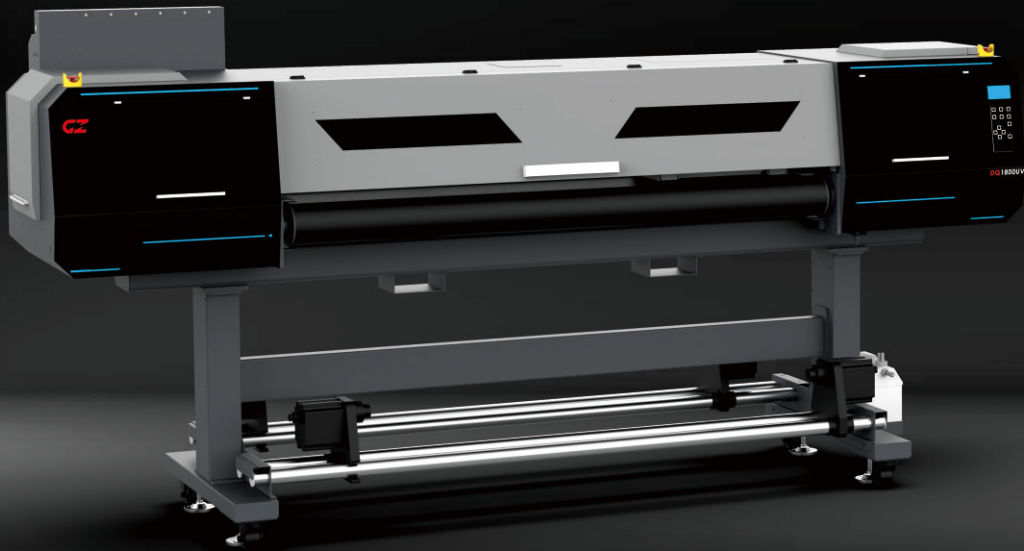


**HUNDERJET**  
BEYOND YOUR IMAGINATION

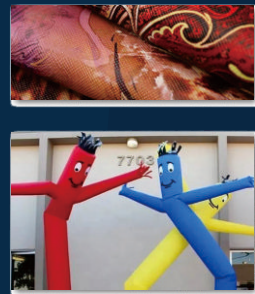
**DQ1800UV**



**Multi-layer printing technique!**

Available with 3/4/5 layers printing.

**Deliver stunning printings for various applications !**



Multi-layer printing



White ink recirculation



Powerful blower for 3 zones



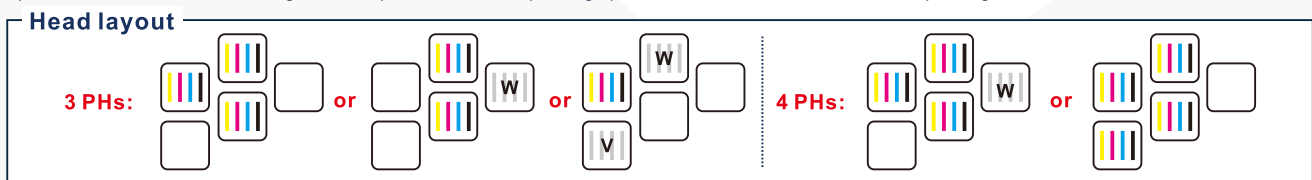
Anti-collision unit



# HUNDERJET DQ1800UV

ITEM	SPECIFICATION				
Model	ThunderJet DQ1800UV				
Print Head	3~4 Epson I3200 U1 print heads				
Technology	Piezo Variable dot(Greyscale)				
Curing System	Duel water cooling LED UV lamps				
Ink	Flexible UV Ink				
Color Config.	KCMY; KCMY+W; W+KCMY +V				
Ink Supply System	Bulk ink supply system + White Ink Recirculation System				
Ink Tank	1000ml				
Printing Width	Max. 1800mm				
Media Type	Banner, Vinyl, Backlit textile, leather, PVC film, PET film.....				
Roll Diameter	Max. 300mm				
Roll Weight	Max. 50kgs				
Core Diameter	3 in (76.2mm) or 2 in (50.8mm)				
Printing Speed	Mode	Resolution	Color(3H)	CWC	CKWKC
	Draft	720x1200 dpi	46.8m <sup>2</sup> /h	20m <sup>2</sup> /h	
	Production	720x1200 dpi	41m <sup>2</sup> /h	17m <sup>2</sup> /h	3.9m <sup>2</sup> /h
	High-res	720x1800 dpi	32.5m <sup>2</sup> /h	11m <sup>2</sup> /h	
	Photo	720x1800 dpi	23m <sup>2</sup> /h	7.6m <sup>2</sup> /h	2.6m <sup>2</sup> /h
Data Interface	External: Ethernet; Internal: Fiber Optical				
Working Environment	Temp.23°C~29°C, Humidity:50%~80%				
Software	FlexiPRINT/ ONYX(Optional)...+GZ Printer Manager				
Power	Single phase, 50Hz/AC, 220V±10%, 5A(Printer+UV Controller)				
Packed/Installed Size	LxWxH(mm):3600x1150x950/3433x1052x1663				
G.W./ N.W.	761kgs/ 615kgs				

Specifications are liable to change without prior notice. The printing speeds are measured in 1.8 m width printing.



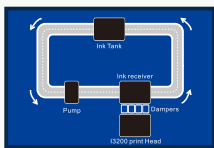
### Mesh Belt System

Mesh Belt Type suits a wider range of materials, especially for those materials with tension. It ensures the precise guide and good printing performance.



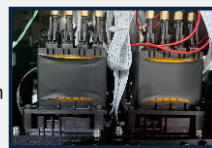
### Multi-layer Printing Application

Particularly designed for multi-layer applications: colorful; 2layers:W+C/C+W; 3layers:CWC; 4layers:CKWC-Day and Night; 5layers:CKWKC on demand with fine details.



### White Ink Recirculation System

The white ink is circulated at regular intervals during idle time to prevent pigment sedimentation that leads to malfunctions of the print head.



### Intelligent Heating Unit

New-developed heating for ink supply system and print head to ensure smooth ink flow and stable printing performance.

## Gongzheng Group Co., Ltd.

Add: Miaobei Village, Yongjia County, Wenzhou City, Zhejiang Province, China 325105  
Tel: +86-577-67319778  
Email: gzsales@gongzheng.com  
Web: www.gongzheng.com



@GONGZHENG GROUP

### Authorized distributor:

